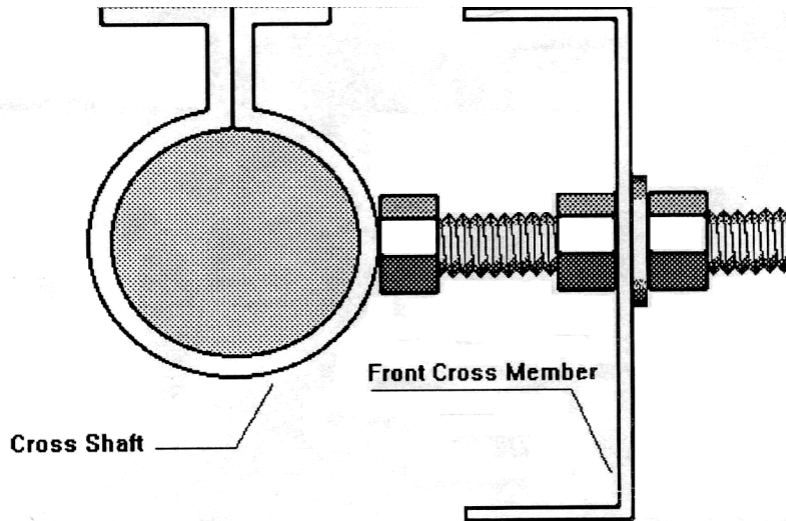


IMPROVING REAR BRAKES ON PRE-1930 SEVENS

From the Pre War Austin Seven Club Magazine:

Earlier Sevens with uncoupled brakes suffer from a very spongy brake pedal, due to the amount of flexing in the brake linkage. Most of this is because the cross-shaft bearings are made from strip, and move considerably under braking force.

A quick mod can be done to improve this. It takes half an hour to do, needs no dismantling, and the only materials needed are a 5/16 BSF x 2 1/2" bolt, spring washer and two nuts. Drill a 5/16" hole in the front cross member in line with the centre of the offside cross shaft bearing, and insert the aforementioned bolt with one nut on, fit the washer and second nut. Adjust so it bears against the cross-shaft bearing. That's it.



As a bonus, this will also give a fine adjustment for balancing the rear brakes. On the subject of brakes, why is it, whenever there are more than twenty Sevens gathered, at least one has the rear brake levers turned upside-down?